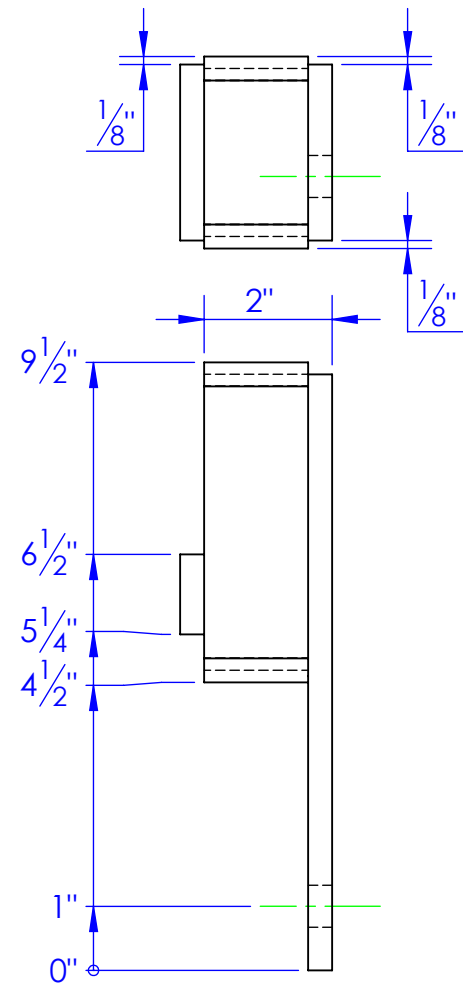
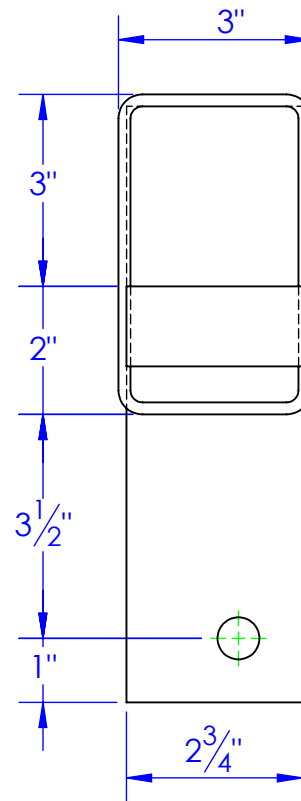
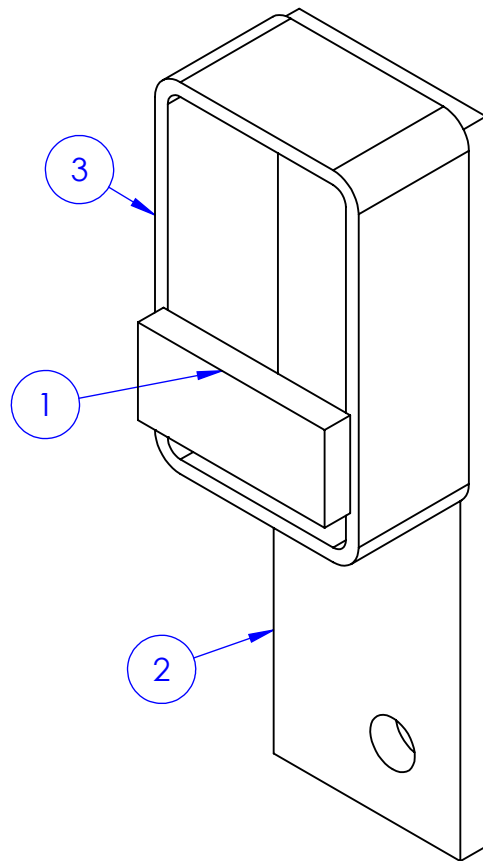


ITEM NO.	PART NUMBER	DESCRIPTION	MATERIAL	DRAWING #	QTY.
1	FI .375 X 1.25 L 2.75	LENGTH: 2-3/4"	FI 3/8x1-1/4"	STOCK	1
2	FP-LL STRAP 9.3125	LEVEL LOK MOUNTING STRAP 9-5/16"	ST-FI 3/8x2-3/4"	90-2823	1
3	RT 5x3x.1875 L 1.625	LENGTH: 1-5/8"	ST-RT 5x3x3/16	STOCK	1

	REVISIONS		
REV.	DESCRIPTION	DATE	APPROVED
A	REV. TO NEW STANDARD DRAWING FROM 10-1816	1/21/2013	



PROPRIETARY AND CONFIDENTIAL
THE INFORMATION CONTAINED IN THIS DRAWING IS THE SOLE PROPERTY OF TRIPLE C INC. ANY REPRODUCTION IN PART OR AS A WHOLE WITHOUT THE WRITTEN PERMISSION OF TRIPLE C INC. IS PROHIBITED.

DIMENSIONS ARE IN INCHES TOLERANCES: FRACTIONAL $\pm 1/16$ ANGULAR: MACH ± 1 BEND \pm TWO PLACE DECIMAL ± 010 THREE PLACE DECIMAL ± 005	
MATERIAL	--
DO NOT SCALE DRAWING	

NAME	DATE
DRAWN HEATH	1/21/2013
PART #	FP-CLL2- REAR PS
ASM #	
COMMENTS:	
CLL-2 LEVEL LOK REAR PASSENGER SIDE	

P.O. BOX 248,
SABETHA, KS 66534

TRIPLE C
INC.

SIZE A	DWG. NO. 90-1802-29	REV. A
SCALE:1:3	WEIGHT: 4.33	SHEET 1 OF 1